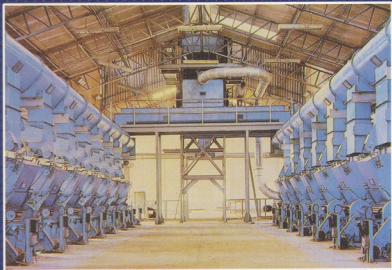


NIPHA

SERVES GINNERIES WORLD-WIDE



An ISO
9001:2000
Company

QUALITY THAT'S WORLD CLASS

Nipha is proud to be a totally Indian company with an international tag of excellence.

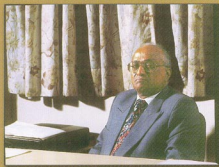
A company that has perfected in-house systems & procedures to produce 'QUALITY THAT'S WORLD CLASS'.

Nipha is renowned in the domestic and global market for easily identifiable reasons :

- Expert mobilization of indigenous skills and resources, manufacturing diverse products from state-of-the-art engineering equipment, precision machinery, gear boxes, thrust housings, cotton ginning and pressing machinery and plants to basic products like forgings, castings, agricultural machinery parts and carbon and alloy steel bars
- An integrated network for after sales service and a team of dedicated engineers experienced in all the facets of turnkey project management and consultancy services
- A high performance R & D Cell to continually reap the benefits of latest technological innovation
- Strict adherence to design and specifications, satisfactory performance, ease of maintenance ensures on-going relationship with customers

Nipha is acknowledged as a multidimensional international organization :

- Nipha products are being exported to the quality conscious market of USA, Canada, European Union, New Zealand and Australia. Today, Nipha has emerged as a reliable source of OEMs in these markets for their requirement
- Technology, consultancy services, and turnkey projects are regularly provided to countries of Africa, Southeast Asia and the Middle East
- Nipha has been awarded numerous projects and contracts by multilateral funding agencies like World Bank and African Development Bank against international competitive bidding



The Chairman, Mr. G. D. Shah has more to add : "The Spirit of Nipha is not limited just to smooth operations and being big. I started with only a modest machine shop in 1960. The forte of this organization lies in its people and the values it cherishes. Never lose sight of these two."

NIPHA AND THE COTTON GINNING INDUSTRY

For over four decades Nipha has been serving the cotton ginning industry worldwide, with its comprehensive range of ginning machinery, pre & post cleaning equipment, drying and humidification system, bale presses, complete ginning plant and turnkey services. In the recent past, Nipha has successfully designed, manufactured, installed and commissioned numerous roller ginning and saw ginning plants in India and abroad, most of which have been funded by the World Bank. Nipha also completed the modernisation of ginning and pressing factories in Sudan, in two phases, without affecting production.

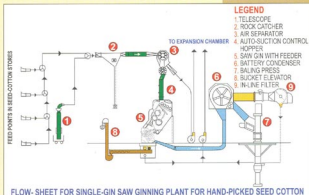
Nipha has the distinction of having set up the highest number of mechanized double roller cotton ginning and pressing plants in the world — a testimony to the customer satisfaction and service provided by Nipha.

NIPHA'S MANUFACTURING FACILITIES

Nipha manufactures its own requirements of special steels, castings, forgings and fabricated items.

All components are machined in house with the help of jigs and fixtures to ensure their interchangeability.

Stringent quality control measures are imposed on all manufacturing processes, till the final assembly of components and equipment.



A Design and Project Cell constantly monitors all technical activities of the Company, including execution of turnkey projects, incorporation of the latest innovations in equipment design and the application of modern management technique.

Nipha's own manufacturing capacity is supplemented by a well developed vendor base. Specialised items such as electrical motors, controls, hydraulics, bearings, chains, belts and special drives are sourced from the most reputed manufacturers. Irrespective of the source, all such items are subjected to intensive quality checks prior to use.

A team of installation and commissioning experts are used to supervise all work at project sites anywhere in the world, at short notice.

SAW GINNING PLANTS

Nipha automatic saw ginning plants are designed for high productivity, making them most suitable for processing of short staple cotton. Single and multi-installations for handling hand-picked and machine-picked seed cotton are available, with optimum layout.



▲ Saw Brush Gin with Feeder



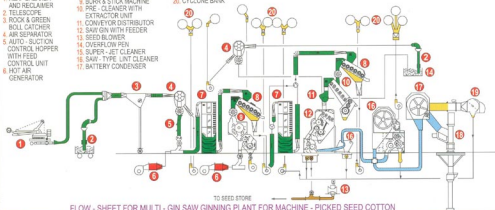
▲ Automatic Double Box Bale Press

LEGEND

1. HEAP BREAKER AND RECLAIMER
2. TELESCOPE
3. ROCK & GREEN BOLL CATCHER
4. AIR SEPARATOR
5. AUTO-SUCTION CONTROL HOPPER WITH FEED CONTROL UNIT
6. HOT AIR GENERATOR

7. TOWER DRIER
8. HOT AIR CLEANER
9. RR & STOK MACHINE
10. PRE-CLEANER WITH EXTRACTOR UNIT
11. CONVEYOR DISTRIBUTOR
12. SAW GIN WITH FEEDER
13. SEED BLOWER
14. OVEFLOW PEN
15. SUPER-JET CLEANER
16. SAW-TYPE LINT CLEANER
17. BATTERY CONDENSER

18. BALING PRESS
19. IN-LINE FILTER
20. CYCLONE BANK



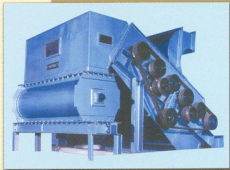
FLOW - SHEET FOR MULTI - GIN SAW GINNING PLANT FOR MACHINE - PICKED SEED COTTON

OTHER GINNING EQUIPMENT

Nipha's range also includes pre-cleaners, lint cleaners, universal and high density baling presses, humidification and drying systems for moisture control to meet specific requirements of individual customers. Semi-mechanized ginning and pressing plants are also manufactured and installed to suit specific budgets and local conditions.



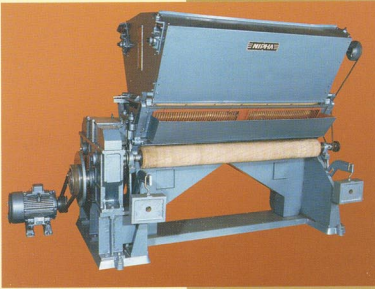
▲ Battery Condenser



▲ Inclined Pre-cleaner

**NIPHA DOUBLE ROLLER GIN
MODEL SUP-CAP 60- CLASSIC**

(An Improved version of Model SUP-CAP 60)



THE WORLD'S FINEST ROLLER GINS FOR MEDIUM,
LONG & EXTRA LONG STAPLE COTTON

**NIPHA DOOR-LESS BALE PRESS
MODEL 'NDBDP'**



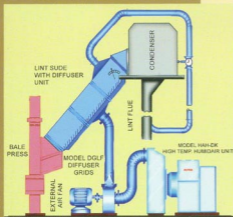
LIFT BOX TYPE
AUTOMATIC
DOUBLE BOX
UNIVERSAL & HIGH DENSITY
DOWN- PACKING
COTTON BALING PRESSES

Installed at floor level and no press pit required; Press design deserves serious consideration where building height poses no problem and the site suffers from constant high water table consequences.

NIPHA LINT CLEANER FOR ROLLER GINNED COTTON MODEL- 'NRGLC'



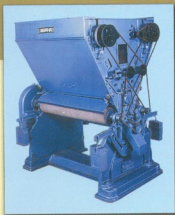
- Cleaner charged with freshly ginned Cotton-Lint by belt conveyor or Pneumatic dropper
- Pin beater opens out the lint and spiked cylinder with Knife-edge grids gently and effectively removes seed-coats, dust and trash in lint
- No saws and hence no possibility of fibre damage
- System design allows bypassing of Lint Cleaner whenever desired
- Trash collects in Trash Chamber for subsequent disposal



NIPHA HUMIDIFIER

HUMIDIFICATION OF COTTON LINT AT LINT SLIDE WITH HUMIDAIR UNIT MODEL HAH-DK AND DIFFUSER GRID MODEL DGLS

- Increased bale weight by restoration of moisture content in lint up to 8% or more and more money due to increased weight of lint.
- Feasibility of producing higher density bales within limitations of tonnage capacity of Bale Press and consequent savings in transportation cost.
- Upgradation of lint due to increased virtual length of fibre staple resulting in premium in prices.
- Savings in power cost due to lower pressing load in Baling
- Elimination of Pala House for storage of lint before baling thereby avoiding the capital cost of building Pala Houses and double handling of lint. With NIPHA Humidair Unit the ginned cotton lint is directly sucked into Battery Condenser for batt formation followed by vapour phase humidification of lint at lint slide guaranteeing positive prevention of lint deterioration and yellowing during long storage of bales and immediate production of bales, all in a continuous operation.



▲ Double Roller Gin with lattice feeder



▲ High capacity Rotary Knife Roller Gin with feeder

LEGEND

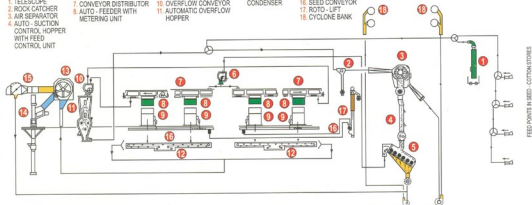
- 1. TELESCOPE
- 2. ROCK CATCHER
- 3. AIR SEPARATOR
- 4. AUTO - SUCTION CONTROL HOPPER WITH FEED CONTROL UNIT

- 5. INCLINED CLEANER
- 6. LINE FEEDER
- 7. CONVEYOR DISTRIBUTOR
- 8. AUTO - FEEDER WITH METERING UNIT

- 9. DOUBLE ROLLER GIN WITH LATTICE FEEDER
- 10. OVERFLOW CONVEYOR
- 11. AUTOMATIC OVERFLOW HOPPER

- 12. LINT CONVEYOR
- 13. BATTERY CONDENSER

- 14. BALING PRESS
- 15. IN - LINE FILTER
- 16. SEED CONVEYOR
- 17. ROTO - LIFT
- 18. CYCLONE BANK



FLOW - SHEET FOR DOUBLE ROLLER GINNING PLANT FOR HAND - PICKED SEED COTTON

ROLLER GINNING PLANTS

Nipha mechanized roller ginning plants are the most suitable for processing of medium, long and extra long staple cotton. The mechanized handling system avoids contamination thus ensuring clean cotton, while maximizing productivity and lint recovery, it minimizes labour requirements and lubricant consumption. Low degradation of fibre helps obtain premium prices for lint.



CORPORATE OFFICE

48, Ganga Jamuna, 28/1, Shakespeare Sarani, Kolkata- 700 017, India

Phone: 91-33- 2287 2511/4447/6640, Fax: 91-33-2287 5104/0780, Website: www.niphaindia.com, E-mail: nipha@niphaindia.com